

# E119 Fire Resistant Frame Solutions

## For Window Wall Assemblies



Pioneer is pleased to partner with Vetrotech, a Saint-Gobain company to provide several new options to the E119 Fire Resistant Frame Solution. New options include, frames without vertical mullions, level 3 bullet resistance, sound ratings up to STC 49, along with corner and angled frames. E119 Frames have been tested and certified to ASTM E119, UL 263 and NFPA 251 standards. E119 Frames also meets the International Building Code for fire resistive rated frame requirements. Fire resistive rated frames and glazing blocks the passage of flames and also blocks the passage of excessive radiant heat and hot gases. This type of product is required by code for transom sidelight and fire window frames with greater than a 45 minute rating or where the glazed area exceeds 25% of the wall area.

### E119 Fire Resistive Glazing Maximum Sizes

Glass Type	UL Fire Rating	Visible Glass Width x Height	Max. sq. inch	Glass Thickness	STC (Level 3 Bullet Resistant)
Contraflam 60	60 Minute	94-13/16" x 94-13/16"	3283	1-1/8"	40
Contraflam Structure 60	60 Minute	138-1/2" x 138-1/2"	7574	1-1/4"	42
Contraflam 90	90 Minute	94-13/16" x 94-13/16"	4435	1-7/16"	45
Contraflam 120	2 Hour	94-5/8" x 94-5/8"	4435	1-9/16"	46
Contraflam Structure 120	2 Hour	126" x 126"	4536	2-1/16"	46
Contraflam 180	3 hour	48" x 48"	2304	3-1/2"	49

### Features:

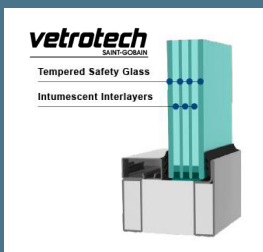
- Fire resistive window frame configurations up to and including 3 hours
- Contraflam glass from Vetrotech fire resistive safety glass must be used. It contains an interlayer that becomes opaque in the event of fire and acts as a heat shield insulating against the fire
- All frames are primed painted or prefinished enamel over galvanized, chemically passivated (GVGC) steel
- Mechanically joined or fully welded construction
- Jamb depths from 2-9/16" to 7-1/8" varying by fire rating
- Frame face from 2-3/4" to 3-9/16"
- Units have no maximum size since these products are tested and certified as wall assemblies

### Options:

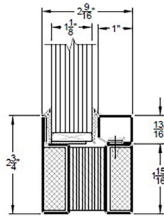
- Corner and angled frames
- Level 3 bullet resistant
- Sound rated up to STC 49
- Frames without vertical mullions

### Applications:

- Stairwells
- Corridors
- Anywhere the glazed area exceeds 25% of the wall

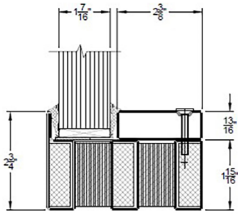


## CONTRAFLAM 60



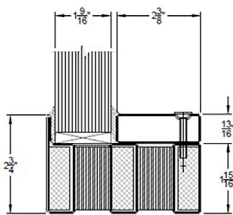
Fire Rating:	60 Minutes
Jamb (System) Depth:	2 -9/16"
Frame Face:	2-3/4" to 3-9/16"
Frame Weight:	3.75 to 4.5 lbs. / Linear ft.
Glass Thickness:	Contraflam 60: 1-1/8"; Contraflam Structure 60 1-1/4"
Maximum Visible Glass:	Contraflam 60: Width 94-13/16", Height 94-13/16", not to exceed 3283 sq. in (Daylight Opening DLO)
Level 3 Bullet Resistance	Contraflam Structure 60: Width 138-1/2" Height 138-1/2", not to exceed 7574 sq. in
STC 40	

## CONTRAFLAM 90



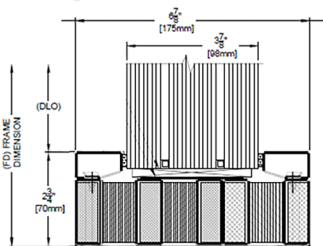
Fire Rating:	90 Minutes
Jamb (System) Depth :	4 -5/16"
Frame Face:	2-3/4" to 3-9/16"
Weight:	6.33 to 6.63 lbs per linear ft.
Glass Thickness:	Contraflam 90: 1-7/16"
Maximum Visible Glass:	Contraflam 90: Width 94-13/16", Height 94-13/16", not to exceed 4435 sq. in (Daylight Opening DLO)
Level 3 Bullet Resistance	
STC 45	

## CONTRAFLAM 120

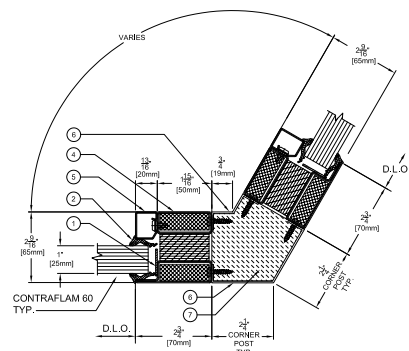


Fire Rating:	120 Minutes
Jamb (System) Depth :	4 -5/16"
Frame Face:	2-3/4" to 3-9/16"
Weight:	6.33 to 6.63 lbs per linear ft.
Glass Thickness:	Contraflam 120: 1-9/16"; Contraflam Structure 120 2-1/16"
Maximum Visible Glass:	Contraflam 120: Width 94-5/8", Height 94-5/8", not to exceed 4435 sq. in (Daylight Opening DLO)
Level 3 Bullet Resistance	Contraflam Structure 120: Width 126" Height 126" not to exceed 4536 sq. in
STC 46	

## CONTRAFLAM 180



Fire Rating:	180 Minutes
Jamb (System) Depth :	6-7/8" and 7-1/8"
Frame Face:	2-3/4" to 3-9/16"
Weight:	34.3 lbs per linear ft.
Glass Thickness:	Contraflam 180: 3-1/2";
Maximum Visible Glass:	Contraflam 180: Width 48", Height 48", not to exceed 2304 sq. in (Daylight Opening DLO)
Level 3 Bullet Resistance	
STC 49	



Corner and angled frames available

The ASSA ABLOY Group is the global leader in access solutions. Every day, we help billions of people experience a more open world.

ASSA ABLOY Opening Solutions leads the development within door openings and products for access solutions in homes, businesses and institutions. Our offering includes doors, frames, door and window hardware, mechanical and smart locks, access control and service.

111 Kero Road  
 Carlstadt, NJ 07072  
 Phone: 201-933-1900  
 pioneerindustries.com

Pioneer is a brand associated with AADG, Inc., an ASSA ABLOY Group company. Copyright © 2020, AADG, Inc. All rights reserved. Reproduction in whole or in part without the express written permission of AADG, Inc. is prohibited.